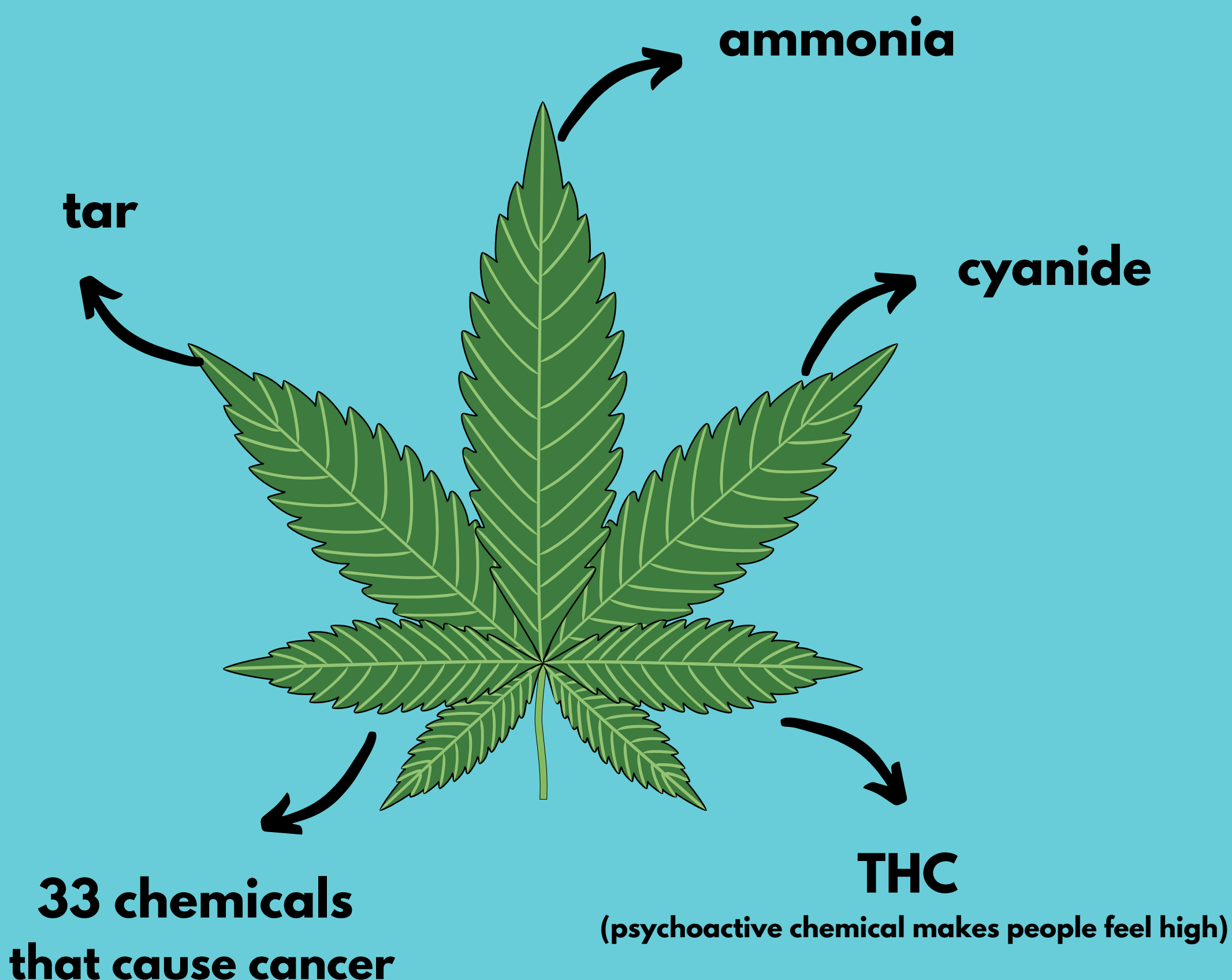


Secondhand Marijuana Smoke

TOXIC EXPOSURE

Since marijuana became legal for adult use in California in 2016, teens are at an increased risk of exposure to secondhand marijuana smoke. Marijuana smoke contains toxic chemicals - just like tobacco smoke.

Marijuana smoke contains:



Exposure to secondhand marijuana smoke can lead to:

- cancer
- allergies
- asthma
- stroke
- heart attack
- hardening of arteries
- secondhand high (contact high)

Source: <https://tobaccofreeca.com/secondhand-smoke/marijuana-secondhand-smoke-dangers/>

Avoid exposure to secondhand marijuana smoke at home, school, and in the car.

Visit angelenosforcleanair.org/MarijuanaSHS for more details and tips.

